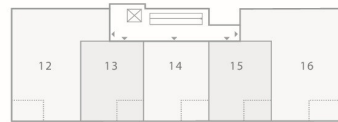
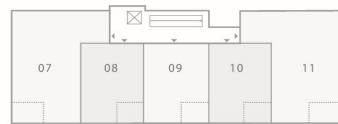
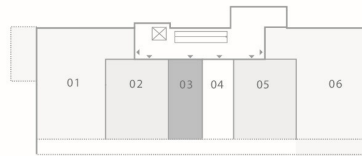






Building 1 / Строение 1

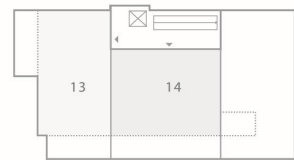
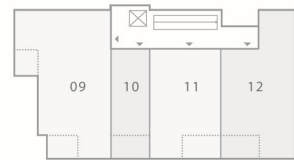
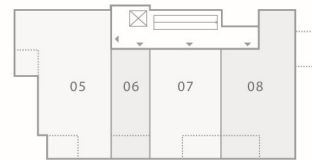
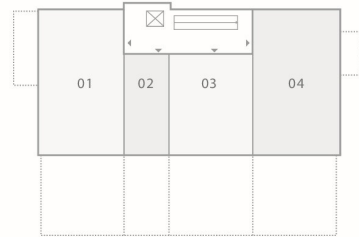
3 floors | 10 apartments
6 Commercial premises



	apartment/ апартамент (№)	total area/ общая площадь (m ²)	terrace included (m ²)	ROOF-TOP (m ²)	price/ стоимость (EUR)	price when paying is 90%/ стоимость при оплате 90% (EUR)
Suteren/ Basement Commercial area	01_01 + 2 parking places	89,97	10,00		379 000	341 100
	01_02 + 1 parking place	44,27			197 000	177 300
	01_03 + 1 parking place	20,14			91 000	81 900
	01_04 + 1 parking place	21,41			96 000	86 400
	01_05 + 1 parking place	44,16			199 000	179 100
	01_06 + 2 parking places	75,99			334 000	300 600
Prezemije/ Ground floor	01_07	80,63	4,88		322 000	289 800
	01_08	43,45	4,62		174 000	156 600
	01_09	43,90	4,62		176 000	158 400
	01_10	43,90	4,62		176 000	158 400
	01_11	74,16	4,88		294 000	264 600
Prvi sprat/ First floor	01_12	80,63	4,88		362 000	325 000
	01_13	43,45	4,62		194 000	174 600
	01_14	43,90	4,62		197 000	177 300
	01_15	43,90	4,62		197 000	177 300
	01_16	74,16	4,88		333 000	299 700

Building 2 / Строение 2

4 floors | 10 apartments
4 Commercial premises

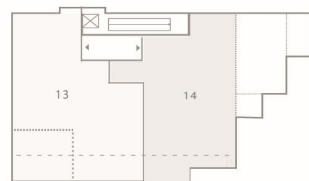
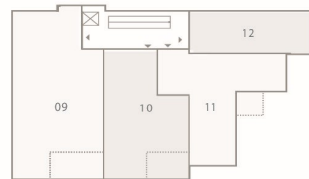
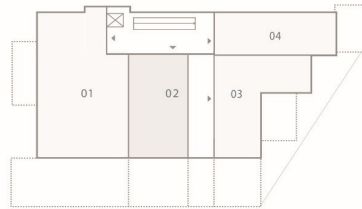


УАловите свое

	apartment/ апартамент (№)	total area/ общая площадь (m ²)	terrace included (m ²)	ROOF-TOP (m ²)	price/ стоимость (EUR)	price when paying is 90%/ стоимость при оплате 90% (EUR)
Suteren/ Basement Commercial area	02_01 + 2 parking places	110,74	45,78		394 000	354 600
	02_02 + 1 parking place	33,65	12,65		129 000	116 100
	02_03 + 1 parking place	77,03	35,41		265 000	238 500
	02_04 + 2 parking places	96,82	35,91		354 000	318 600
Prezemlje/ Ground floor	02_05	84,94	7,70		339 000	305 100
	02_06	26,68	5,68		114 000	102 600
	02_07	53,05	5,95		212 000	190 800
	02_08	61,44	5,95		244 000	219 600
Prvi sprat/ First floor	02_09	84,67	7,90		379 000	341 100
	02_10	26,68	5,68		126 000	113 400
	02_11	53,05	5,95		238 000	214 200
	02_12	71,79	5,95		323 000	290 700
Povuceni sprat/Attic	02_13 ROOF-TOP ACCESS	84,29	16,26	68,03	523 000	470 700
	02_14 ROOF-TOP ACCESS	114,10	54,64	69,46	623 000	560 700

Building 3 / Строение 3

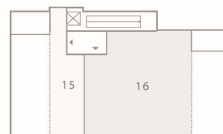
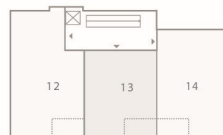
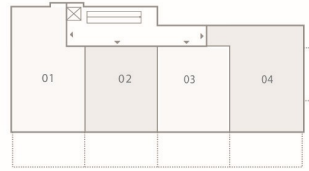
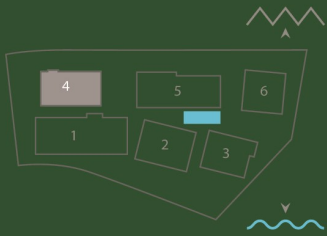
4 floors | 10 apartments
4 Commercial premises



	apartment/ апартамент (№)	total area/ общая площадь (м²)	terrace included (м²)	ROOF-TOP (м²)	price/ стоимость (EUR)	price when paying is 90%/ стоимость при оплате 90% (EUR)
Suterren/Basement Commercial area	03_01 + 2 parking places	104,24	40,25		374 000	336 600
	03_02 + 1 parking place	60,29	23,40		218 000	196 200
	03_03 + 1 parking place	83,99	50,79		259 000	233 100
	03_04 + 2 parking places	30,88	8,00		119 000	107 100
Prezemlje/ Ground floor	03_05	60,54	6,36		242 000	217 800
	03_06	56,00	6,36		224 000	201 600
	03_07	45,30	4,41		181 000	162 900
	03_08	24,94	3,89		106 000	95 400
Prvi sprat/ First floor	03_09	74,46	6,36		334 000	300 600
	03_10	56,00	6,36		252 000	226 800
	03_11	45,30	4,41		204 000	183 600
	03_12	24,94	3,89		119 000	107 100
Povuceni sprat/Attic	03_13 ROOF-TOP ACCESS	100,69	33,15	67,54	509 000	458 100
	03_14 ROOF-TOP ACCESS	74,50	38,32	74,50	609 000	548 100

Building 4 / Строение 4

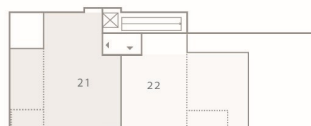
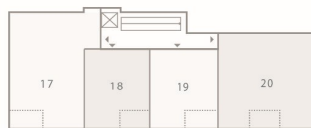
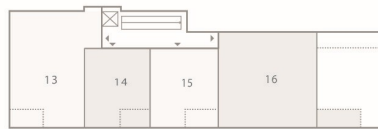
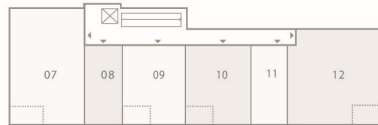
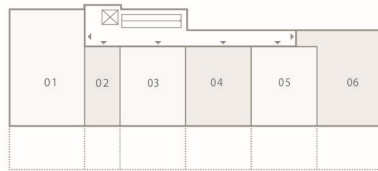
5 floors | 16 apartments



	apartment/ апартамент (№)	total area/ общая площадь (m ²)	terrace included (m ²)	ROOF-TOP (m ²)	price/ стоимость (EUR)	price when paying is 90%/ стоимость при оплате 90% (EUR)
Prezemlje/ Ground floor	04_01	101,76	46,69		313 000	281 700
	04_02	59,00	16,80		199 000	179 100
	04_03	59,00	16,80		199 000	179 100
	04_04	70,81	16,80		249 000	224 100
Prvi sprat/ First floor	04_05	55,02	3,77		219 000	197 100
	04_06	41,09	3,78		188 000	169 200
	04_07	41,09	3,78		188 000	169 200
	04_08	53,85	3,78		242 000	217 800
Drugi sprat/ Second floor	04_09	55,02	3,77		259 000	233 100
	04_10	41,81	3,78		198 000	178 200
	04_11	92,92	46,50		339 000	305 100
Treci sprat/ Third floor	04_12	55,23	3,78		274 000	246 600
	04_13	41,91	3,78		209 000	188 100
	04_14	50,85	4,08		254 000	228 600
Povuceni sprat/Attic	04_15 ROOF-TOP ACCESS	49,21	23,76	25,45	249 000	224 100
	04_16 ROOF-TOP ACCESS	94,17	20,78	73,39	598 000	538 200

Building 5 / Строение 5

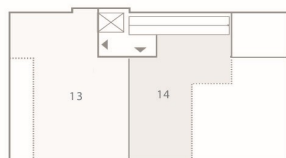
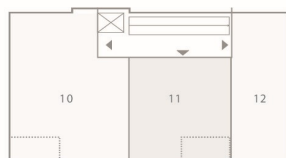
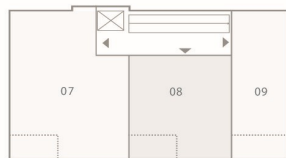
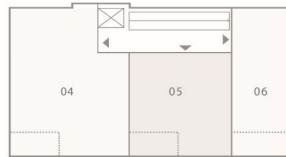
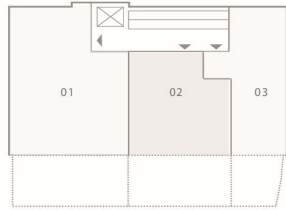
5 floors | 22 apartments



	apartment/ апартамент (№)	total area/ общая площадь (м ²)	terrace included (м ²)	ROOF-TOP (м ²)	price/ стоимость (EUR)	price when paying is 90%/ стоимость при оплате 90% (EUR)
Prezemlje/ Ground floor	05_01	96,93	25,94		334 000	300 600
	05_02	32,70	11,70		114 000	102 600
	05_03	65,21	23,10		216 000	194 400
	05_04	65,55	23,40		216 000	194 400
	05_05	65,33	23,20		214 000	192 600
	05_06	73,74	23,40		248 000	223 200
Prvi sprat/ First floor	05_07	70,80	4,21		318 000	286 200
	05_08	21,00			99 000	89 100
	05_09	41,73	3,72		188 000	169 200
	05_10	41,91	3,78		189 000	170 100
	05_11	22,44			107 000	96 300
	05_12	71,15	8,15		304 000	273 600
Drugi sprat/ Second floor	05_13	70,80	4,21		334 000	300 600
	05_14	41,23	3,78		196 000	176 400
	05_15	41,23	3,78		196 000	176 400
	05_16	116,64	39,85		473 000	425 700
Treci sprat/ Third floor	05_17	70,72	4,21		349 000	314 100
	05_18	41,23	3,78		206 000	185 400
	05_19	41,56	3,78		208 000	187 200
	05_20	75,98	3,78		379 000	341 100
Povuceni sprat/Attic	05_21 ROOF-TOP ACCESS	74,62	17,92	66,62	529 000	476 100
	05_22 ROOF-TOP ACCESS	121,47	72,77	54,94	574 000	516 600

Building 6 / Строение 6

5 floors | 14 apartments



	apartment/ апартамент (№)	total area/ общая площадь (m ²)	terrace included (m ²)	ROOF-TOP (m ²)	price/ стоимость (EUR)	price when paying is 90%/ стоимость при оплате 90% (EUR)
Prezemlje/ Ground floor	06_01	86,91	26,91		289 000	260 000
	06_02	64,59	23,59		209 000	188 100
	06_03	47,28	11,78		165 000	148 500
Prvi sprat/ First floor	06_04	65,44	4,13		294 000	264 600
	06_05	43,66	4,05		196 000	176 400
	06_06	33,47	4,57		158 000	142 200
Drugi sprat/ Second floor	06_07	65,44	4,13		309 000	278 100
	06_08	43,66	4,05		208 000	187 200
	06_09	33,47	4,57		167 000	150 300
Treci sprat/ Third floor	06_10	65,44	4,13		327 000	294 300
	06_11	43,80	4,50		219 000	197 100
	06_12	33,25			174 000	156 600
Povuceni sprat/Attic	06_13 ROOF-TOP ACCESS	61,61	6,30	55,31	429 000	386 100
	06_14 ROOF-TOP ACCESS	72,50	35,08	37,42	364 000	327 600